



810/1 Clara Street SOUTH YARRA VIC

2 2 1

Sun-filled luxury within the exclusive Clara Mews complex with views as far as the eye can see - this is the property investment you need!

? North East facing
 ? Unit 810 on the 8th floor

Positioned on the corner of the eighth floor and benefiting from a wraparound balcony as well as vast expanses of glass, this apartment is the very definition of first-class low maintenance living. Showcasing stunning finishes and offering spacious easy-care accommodation, it features an open plan living/dining zone which incorporates a dedicated work-from-home office area as well as an entertainer's kitchen complete with premium Smeg appliances.

Built-in robes star in both bedrooms - the main also boasts a designer ensuite while an equally stylish main bathroom (with Euro laundry) services the remainder of the home. Ducted heating and cooling keep the apartment comfortable throughout the seasons while also offered are secure video intercom entry, lift access and basement parking.

Residential use of the onsite gym and sauna is a bonus, and this fabulous package is located just moments to

Price : \$ 710,000

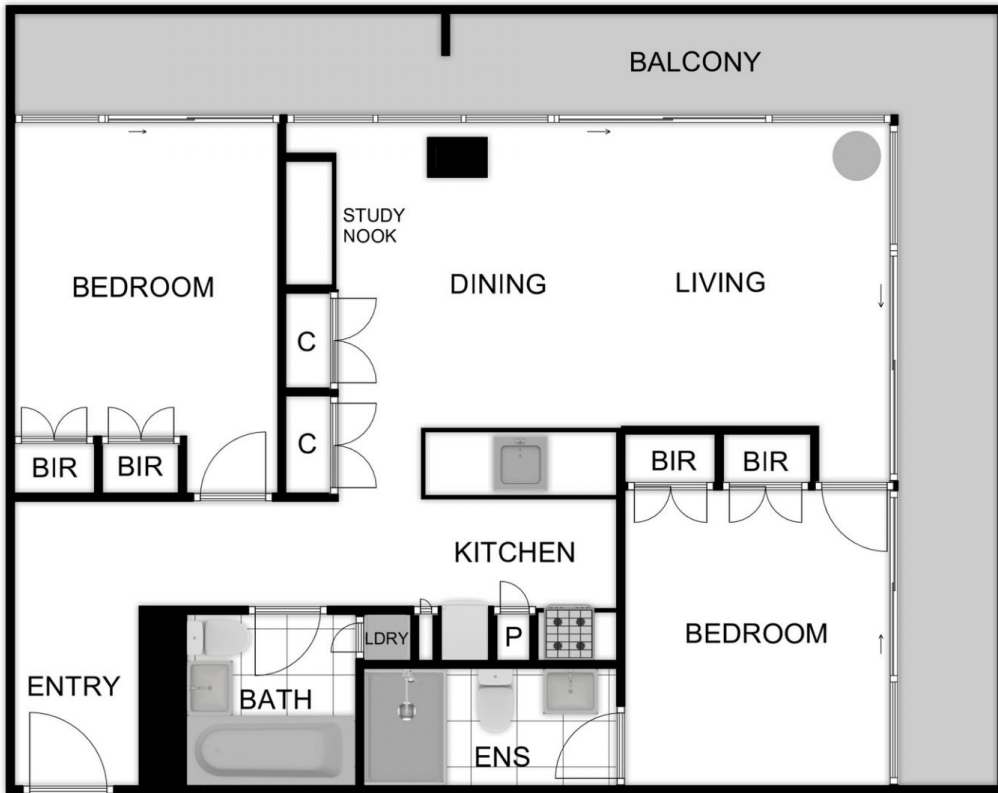
View : <https://www.lewinrealestate.com.au/sale/vic/inner-city/south-yarra/residential/apartment/6362934>



Sharyn Weir
 0413805107



Brian Lewin
 0434047939



Lewin
real estate



810/1 CLARA STREET SOUTH YARRA

THIS FLOORPLAN IS A SKETCH. ALL DATA SHOWN IS GENERAL ONLY.
NB: ALL DIMENSIONS STATED ARE APPROXIMATE ONLY
AND SHOULD NOT BE TAKEN AS DEFINITE.