



## 55 Brampton Street CHELTENHAM VIC

4 🚗 2 🚗 2 🚗

\*\* Whilst Open times are posted, you must book an appointment time\*\*

Nestled amongst 706sqm (approx) of leafy established gardens, this appealing family home is a sanctuary of calm in a highly sought-after neighbourhood.

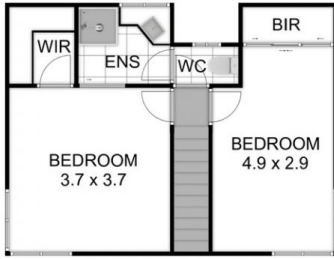
Offering guests a truly warm welcome, it opens to reveal spotted gum floors that flow from the entrance to the vast living area. With space to relax, congregate with friends or dine in style, this zone connects seamlessly with the quality stone kitchen that has been equipped with premium Bosch appliances. Extending the interiors even further, the alfresco patio is ideal for entertainers with its servery window from the kitchen - screened & sheltered and boasting both a ceiling fan and mains gas heater, it is ready to adapt whatever the weather.

Four bedrooms in total are a real drawcard for families, they include a desirable ground-floor master with considerable storage and a sparkling ensuite. A further bedroom is downstairs - whilst the two upstairs rooms also with ample wardrobing share a central bathroom with two-way WC.

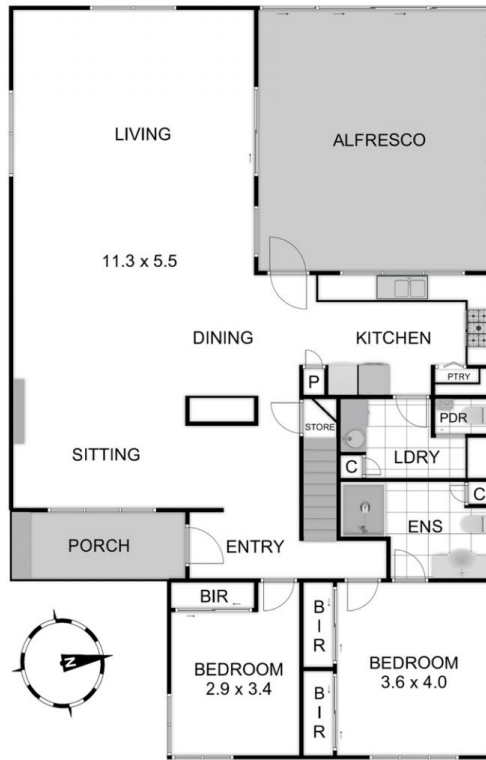
A large laundry and downstairs powder room plus considerable storage conclude the accommodation -

**Land Size** : 706 sqm

**View** : <https://www.lewinrealestate.com.au/sale/vic/bayside/cheltenham/residential/house/6461293>



FIRST FLOOR



GROUND FLOOR



55 BRAMPTON STREET  
CHELTENHAM

THIS FLOORPLAN IS A SKETCH. ALL DATA SHOWN IS GENERAL ONLY.  
NB: ALL DIMENSIONS STATED ARE APPROXIMATE ONLY  
AND SHOULD NOT BE TAKEN AS DEFINITE.



SITE PLAN