



11/396 Station Street BONBEACH VIC

1 1 1

Peaceful Place Right at the Rear!

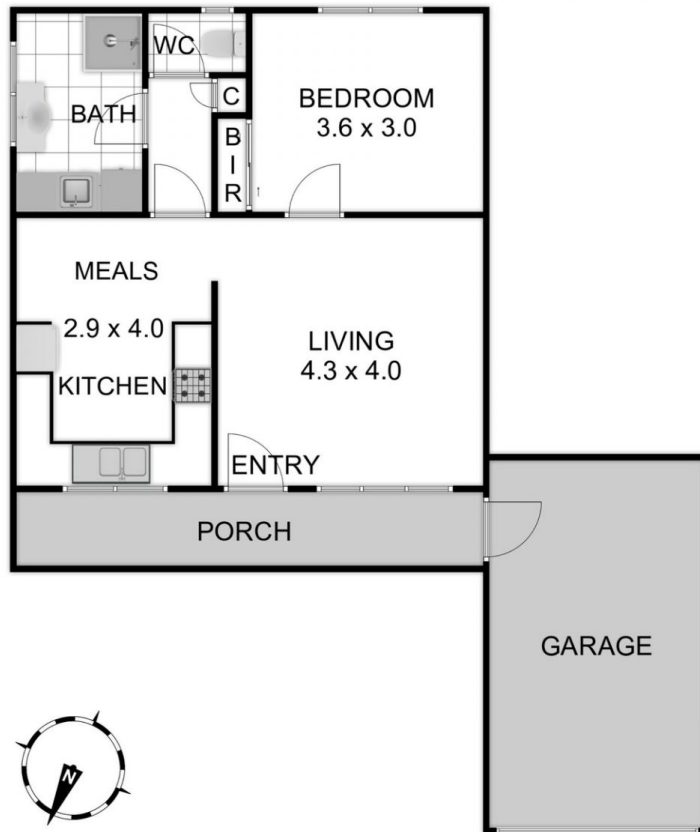
Right at the back of an incredibly spacious group, this ground-floor apartment is the perfect place to unwind after a busy day. Making no demands when it comes to maintenance, this superbly peaceful home is located just metres from the station, so once you get back to Bonbeach, youâ€™ll be home within seconds.

Flushed with natural light thanks to massive windows and enjoying outlooks to the lawned communal areas, the home features a generous lounge as well as a supersized kitchen equipped with stainless steel appliances and offering ample space for relaxed meals. The tranquil bedroom is a true double and features a wall of robes, whilst the contemporary bathroom is stylish & practical and boasts the benefits of convenient laundry facilities â€” an energy efficient heater and the bonus of a lock up garage conclude a brilliant first home or investment.

Head to the beach on your day off, wander for coffee or enjoy the nearby riverbank walking tracks - this is a premium lifestyle location at a fabulous entry-level price.

**Price** : \$380,000 to \$400,000

**View** : <https://www.lewinrealestate.com.au/sale/vic/bayside/bonbeach/residential/unit/6548769>



## 11/396 STATION STREET BONBEACH

THIS FLOORPLAN IS A SKETCH. ALL DATA SHOWN IS GENERAL ONLY.  
NB: ALL DIMENSIONS STATED ARE APPROXIMATE ONLY  
AND SHOULD NOT BE TAKEN AS DEFINITE.

**Lewin**  
real estate