



24 Kardinian Avenue CHELTENHAM VIC

3 🏠 1 🚗 2 🚗

Creating the perfect springboard to launch into a great neighbourhood, this inviting brick home offers comfortable spaces with loads of potential for the future. Featuring warm hardwood floors and a practical floorplan, young buyers can settle here and then in time explore options to extend out or up (STCA) as their family grows.

This is a classic home with real appeal boasting a wide welcoming entrance that flows to a tranquil lounge and dining room. A light-filled meals area is adjacent the bright kitchen that offers sleek stainless steel appliances including a Bosch dishwasher, whilst out through the laundry a sunny patio overlooks the family-friendly garden.

Offering three well-sized bedrooms all with fitted storage plus a central bathroom with separate WC, this well-maintained setting also includes ducted heating, split system cooling and a generous lock-up garage.

With Huss' milk bar at the end of the road, Kingston Heath Primary School and childcare nearby plus parklands, bus routes and DFO on-hand, the sought-after Farm Road precinct is also zoned for Cheltenham Secondary College.

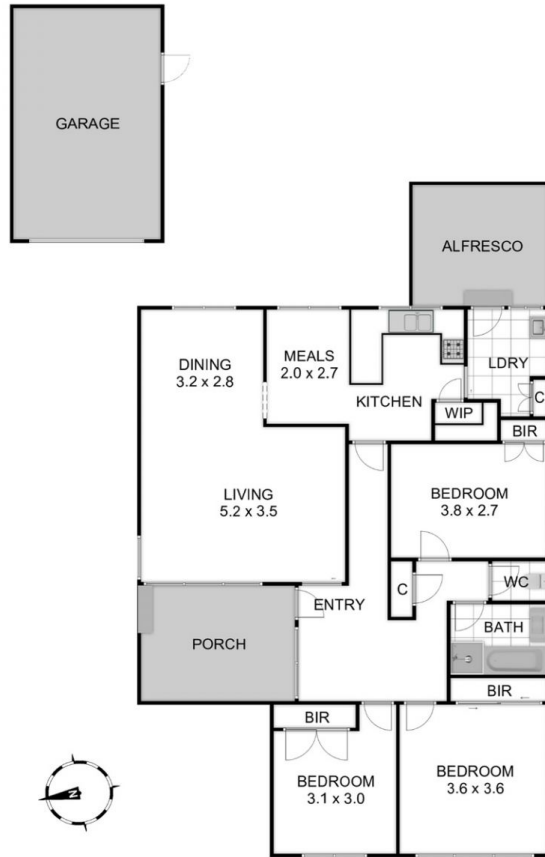
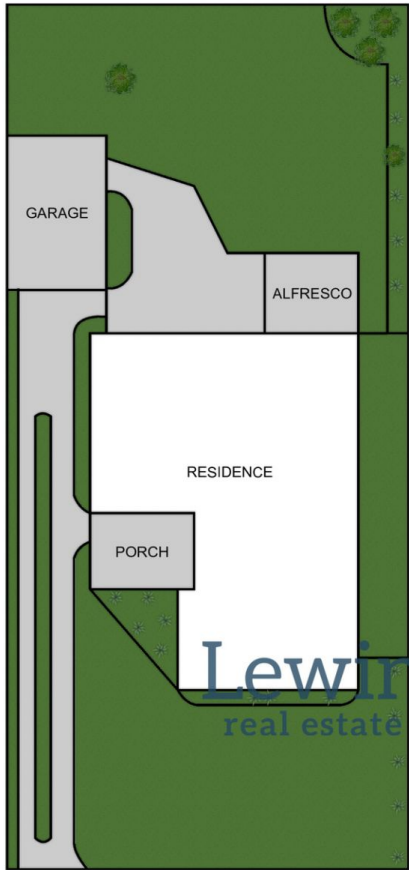
Price : \$ 1,345,000
Land Size : 530 sqm
View : <https://www.lewinrealestate.com.au/sale/vic/bayside/cheltenham/residential/house/6666729>



Brian Lewin
0434047939



Sharyn Weir
0413805107



24 KARDINIAN AVENUE CHELTENHAM

THIS FLOORPLAN IS A SKETCH. ALL DATA SHOWN IS GENERAL ONLY.
NB. ALL DIMENSIONS STATED ARE APPROXIMATE ONLY AND SHOULD NOT BE TAKEN AS DEFINITE.