



**26 Queen Street PARKDALE VIC**

3 2 2

**Quality & Class with an Exclusive Address**

One of a privileged few homes to front leafy Queen Street, this builder's own home offers rare exclusivity in a luxurious low maintenance setting. Barely two years old and rich with quality fixtures, this is a home where every inch of its land and every corner of the floorplan has been used to optimum effect.

Beyond a classic Hamptons' inspired frontage, solid oak floors flow past a dedicated study zone to the attractive entertaining area. Offering space for quiet nights with the family or fabulous get togethers with friends, this zone connects seamlessly with a stunning kitchen boasting striking ebony shaker cabinets, an integrated dishwasher and gourmet 900mm black oven. With waterfall stone topping the breakfast bar, a marble tiled splashback and fabulous butler's pantry, hosts will love to entertain here or out on the alfresco deck that spills to a sparkling heated pool.

A second living area upstairs is desirable offering for families, also here are three tranquil bedrooms (robes) including a stylish ensuite master. A stunning family bathroom with wet-room style shower and clawfoot bath makes yet another statement, whilst the quality is evident in

**Land Size** : 255 sqm

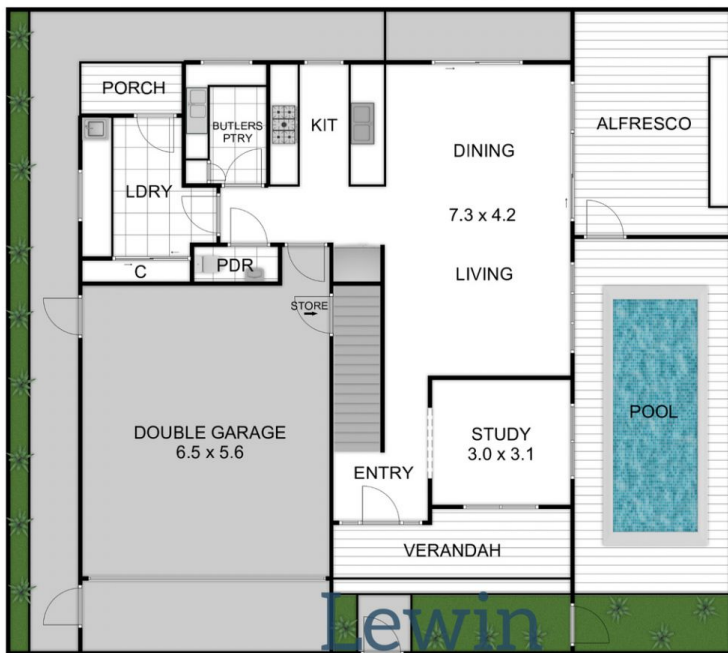
**View** : <https://www.lewinrealestate.com.au/sale/vic/bayside/parkdale/residential/house/6674503>



**Brian Lewin**  
0434047939

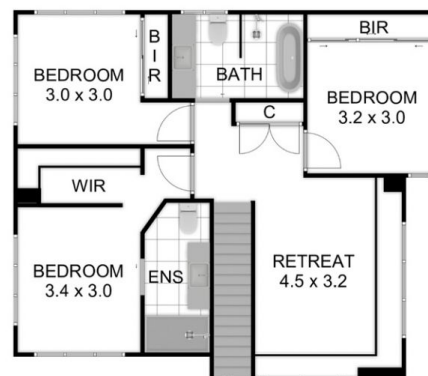


**Lesley Kilby**  
0428277263



ewin  
real estate

GROUND FLOOR/SITE



FIRST FLOOR



## 26 QUEEN STREET PARKDALE

THIS FLOORPLAN IS A SKETCH. ALL DATA SHOWN IS GENERAL ONLY.  
 NB: ALL DIMENSIONS STATED ARE APPROXIMATE ONLY  
 AND SHOULD NOT BE TAKEN AS DEFINITE.