



6/134-136 Lower Dandenong Road PARKDALE VIC

2 1 1

Make a confident step into property ownership either as an owner-occupier or investor thanks to this neat unit in a prized part of town. Set back from the road in a well-maintained group, the freshly painted home is the very essence of low maintenance. Featuring warm hardwood floors, the practical floorplan includes a good-sized living & dining area that connects with a bright kitchen offering a new oven and induction cooktop. Both of the spacious bedrooms benefit from fitted robes and share the combined bathroom/laundry plus a handy separate WC, while an energy efficient heater and ceiling fans plus an easy-care yard with shed and carport parking are all on offer. Perfectly positioned to be able to jump on the bus or head to local shops for supplies, this location is also within easy reach of Thrift Park and DFO.

[For full version visit the website](https://www.lewinrealestate.com.au/7085814)

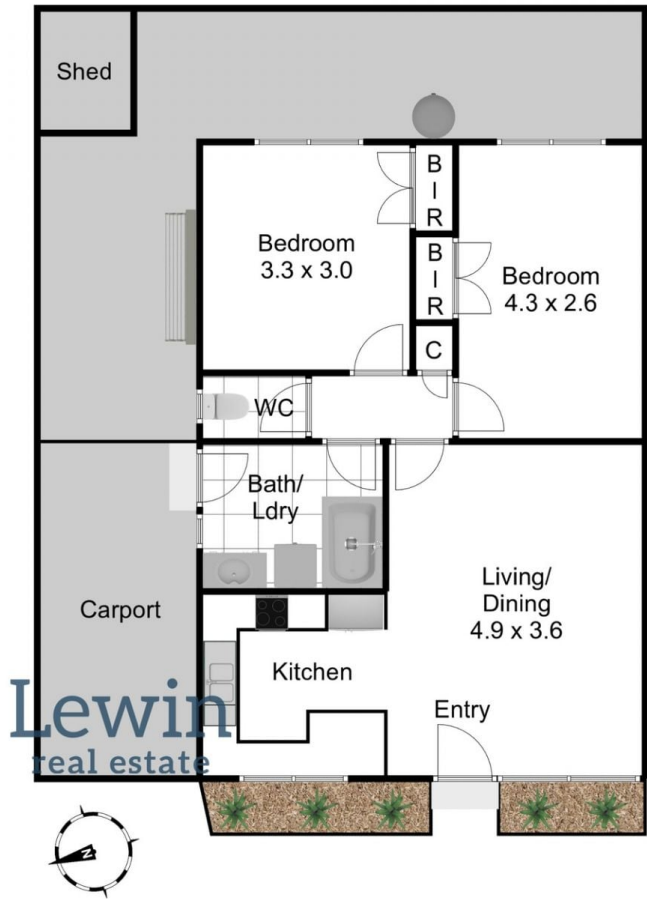
Type : Unit
Price : \$ 570,000
View : <https://www.lewinrealestate.com.au/7085814>



Lesley Kilby
0428277263



Brian Lewin
0434047939



6/134-136 Lower Dandenong Road
Parkdale

This floorplan is a sketch. All data shown is general only.
NB: All dimensions stated are approximate only and should not be taken as definite.