



1/17 Wright Street BENTLEIGH VIC

4 **2** **2**

Showcasing the classic charm of a Californian Bungalow while offering space for families in easy-care gardens, this heart-warming home might just be the perfect package!

The curbside appeal is undeniable, with a shady verandah providing the first welcome then once inside, tall stucco walls and lofty ceilings rich with decorative plasterwork are irresistible highlights along with delicate leadlight & stained glass windows.

To the front are two generous double bedrooms both with beautiful ceilings, one flowing through to the formal lounge which features a cosy open fireplace. Two further bedrooms are also offered. Embracing the Siemens & Smeg equipped kitchen is an open plan living and dining zone that extends out to an alfresco entertaining deck and sunny west-facing patio.

Two bright bathrooms - one with laundry facilities - ducted heating and a split system are also offered, while concluding a tempting opportunity are a garden shed and on-site parking.

Perfectly located within the easiest stroll of cafes, shops and Bentleigh Station, this peaceful street is also close to Allnutt Park, well-serviced by bus routes and in-zone for Brighton Secondary College.

Price : \$ 1,305,000

View : <https://www.lewinrealestate.com.au/sale/vic/bayside/bentleigh/residential/house/7161887>



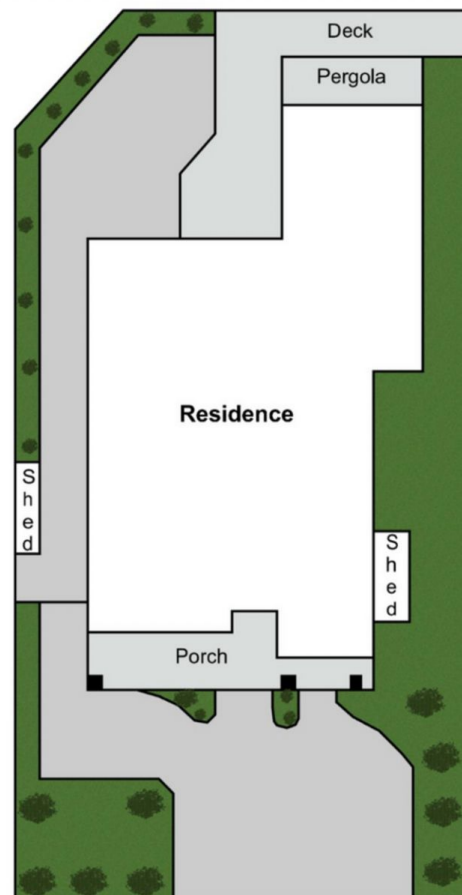
Brian Lewin
0434047939



Lesley Kilby
0428277263



FLOOR PLAN



SITE PLAN

1/17 Wright St Bentleigh VIC 3204

THIS FLOOR PLAN IS A SKETCH ALL DATA SHOWN IN GENERAL ONLY.
NB: ALL DIMENSIONS STATED ARE APPROXIMATE ONLY
AND SHOULD NOT BE TAKEN AS DEFINITE.

