






**6/134-136 Lower Dandenong Road PARKDALE VIC**

**2  1  1 **

Set Back from the road in a well-maintained group, this freshly painted home is the very essence of low maintenance and is sure to impress.

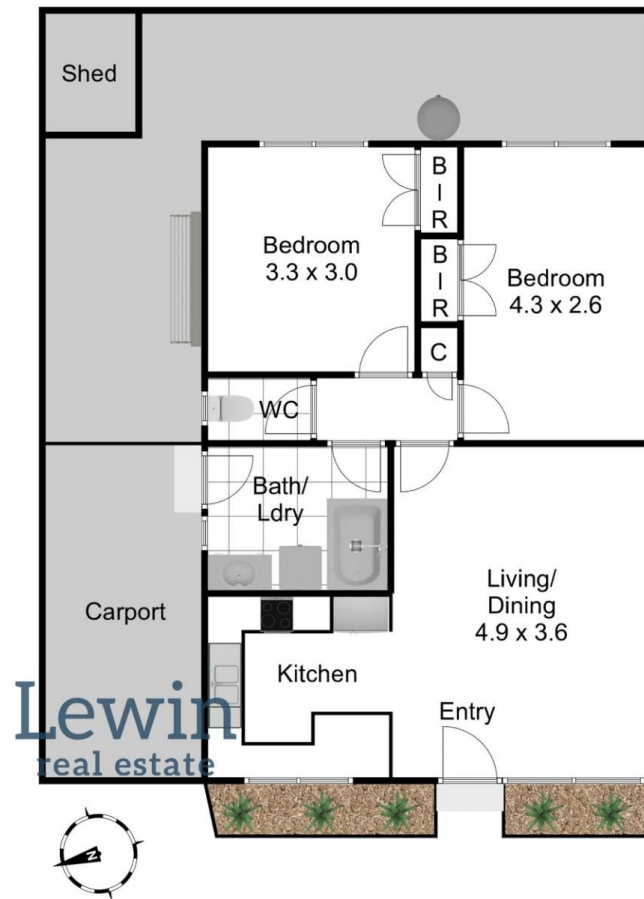
Featuring warm hardwood floors, the practical floorplan includes a good-sized living & dining area that connects with a bright kitchen offering a modern oven and cooktop. Both spacious bedrooms benefit from fitted robes and share the combined bathroom/laundry plus a handy separate WC, while an energy efficient heater and ceiling fans plus an easy-care yard with shed and carport parking are all on offer.

Perfectly positioned to be able to jump on the bus or head to local shops for supplies, this location is also within easy reach of Thrift Park and DFO.

**View :** <https://www.lewinrealestate.com.au/lease/vic/bay-side/parkdale/residential/unit/7162827>



**Lesley Kilby**  
**0428277263**



6/134-136 Lower Dandenong Road  
Parkdale

This floorplan is a sketch. All data shown is general only.  
NB: All dimensions stated are approximate only and should not be taken as definite.