






206/1056 Nepean Highway HIGHETT VIC

2  2  1 

Lifestyle Living with True Designer Style

Hideaway in designer style within the sun-splashed interiors of this luxury apartment. Predominantly 'Owner Occupiers' and positioned on the top floor of the boutique 'Era' development, this stylish property enjoys a preferred westerly aspect and dishes up the most tranquil low maintenance lifestyle. Enjoy a cocktail or two on the quiet rear balcony watching the sun set.

An idyllic base for families, busy commuters or a fabulous investment.

Be proud to welcome guests to the atrium foyer where lift access gives easy access up to the peaceful double-glazed home. Featuring luxe herringbone laid floors through the open plan living and dining zone, there is a top-quality kitchen boasting stone benchtops and premium Kleenmaid appliances. Thanks to its coveted position, a larger-than-most balcony extends the living into the fresh air and takes in open leafy outlooks across the rooftops.

The master bedroom benefits from masses of storage along with a desirable study nook, its luxe ensuite bathroom showcasing a twin vanity and decadent rain-head shower. This styling is echoed in the second bedroom

Price : \$575,000 to \$625,000

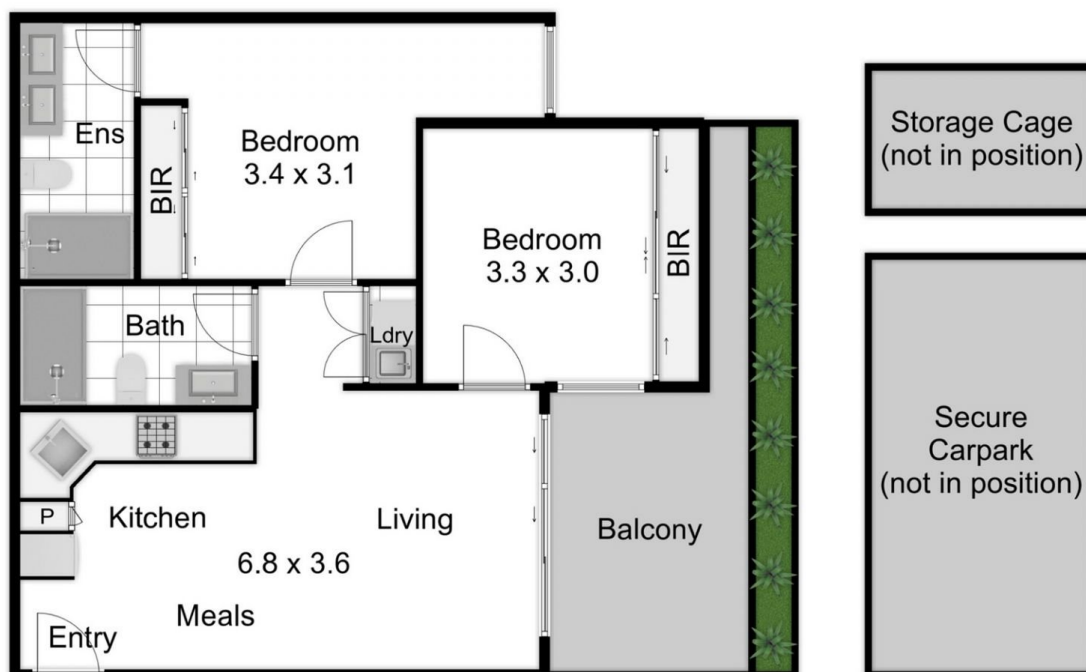
View : <https://www.lewinrealestate.com.au/sale/vic/bayside/highett/residential/apartment/7917048>



Brian Lewin
0434047939



John Hassett
0437452514



206/1056 Nepean Highway Highett

This floorplan is a sketch. All data shown is general only.
NB: All dimensions stated are approximate only and should not be taken as definite.