



601/9b Remington Drive HIGHETT VIC

3 🛏 2 🚿 2 🚗

Rising high above Highett's streetscape and taking in far-reaching panoramas from its living areas and wrap-around terrace, this beautifully appointed penthouse apartment is your golden ticket to an incredibly luxurious - and extremely enviable - lock-up-and-go lifestyle.

Type : Apartment
Price : \$1,150,000 to \$1,240,000
View : <https://www.lewinrealestate.com.au/sale/vic/bayside/highett/residential/apartment/7939112>

Situated on the very top floor of the coveted Vista Apartment complex, where the living is elevated even further thanks to securely gated entry and the inclusions of both an onsite gym and pool, this stunning 'crowning glory' is bound to exceed all expectations.



Brian Lewin
0434047939

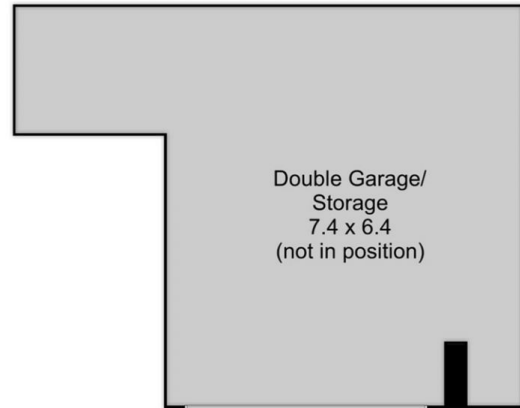
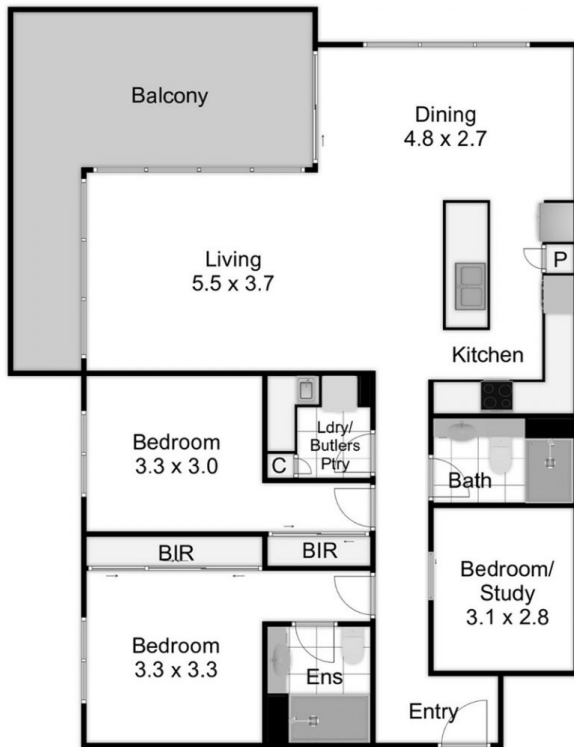


John Hassett
0437452514

With walls of ceiling-height glass allowing the views to take centre stage, the open plan living/dining zone and sophisticated Asko-equipped kitchen (induction cooktop) create a host's dream setting. There is even more invaluable entertaining space out on the terrace where you will never tire of the outlooks to William Fry Reserve and beyond.

Built-in wardrobes and a chic & stylish ensuite are

[For full version visit the website](https://www.lewinrealestate.com.au)



601/9B Remington Drive
Highett

This floorplan is a sketch. All data shown is general only.
NB: All dimensions stated are approximate only
and should not be taken as definite.

Lewin
real estate