



**104/1146 Nepean Highway HIGHETT VIC**

2 🏠 2 🚗 2 🚗

Be whisked away to the tranquil refined elegance of this stunning ground floor apartment. The former display home for a highly-desired parkside development, it offers the ultimate in low maintenance boutique living close to an array of conveniences.

Finished in calming grey tones with as-new NZ wool carpet, the brilliant 112sqm (approx) layout flows from a distinct entrance to meet an architecturally-designed curvaceous home office complete with custom form-fit desk. The sweep of these walls lure you into the open plan entertaining zone where a luxe upgraded kitchen offers incredible storage, brand-new 900mm multi-function oven and induction cooktop plus Asko dishwasher: plenty of bench space, a breakfast bar and new glass cabinetry are added highlights. Extending the living area, the balcony wraps two sides of the property to provide space to relax and BBQ while enjoying outlooks to the complex's green and leafy spaces.

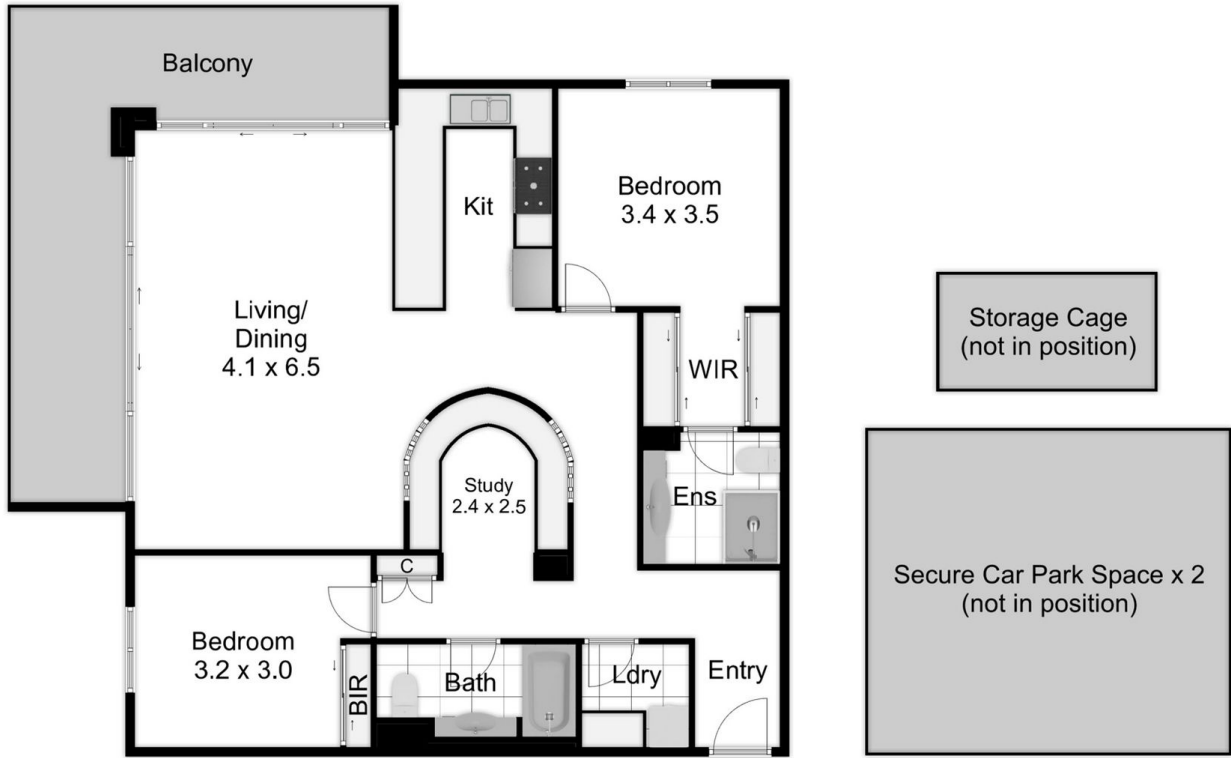
Both of the double bedrooms showcase ample built-in wardrobing and French doors to Juliette balconies to allow a lovely flow of fresh air - the master also enjoying a luxe ensuite. A main bathroom with bath plus a full laundry are also offered together with discreet ducted heating/cooling,

**Price** : \$840,000 to \$890,000

**View** : <https://www.lewinrealestate.com.au/sale/vic/bayside/highett/residential/apartment/7961068>



**Brian Lewin**  
**0434047939**



104/1146 Nepean Highway  
Highett

This floorplan is a sketch. All data shown is general only.  
NB: All dimensions stated are approximate only and should not be taken as definite.