



2/8 Hawke Street PARKDALE VIC

3 2 2

Those with a love of all things mid-century will fall head over heels for this fabulous 3-bedroom, 2-bathroom abode in a quiet pocket of leafy Parkdale.

Nestled on an easy-to-maintain allotment of approx. 366m² - with its own street frontage and no shared land - it is an offering brimming with character, and one that has been primed & primed for immediate enjoyment while still dishing up plenty of scope for some further easy enhancements if desired.

Blessed with broad windows and crowned by glorious timber ceilings with classic exposed beams, the single level accommodation is warm & welcoming. Among its standout features are an inviting lounge with front garden views, a dining area and a well-equipped, sun-filled kitchen with gas cooktop, wall oven and lots of cupboard space.

Enjoying access to the generous and secure back yard, a separate family room provides even more invaluable living space while three bedrooms and two bathrooms are also offered - including the master with ensuite.

With polished floors and new carpets adding to the home's enormous appeal, there is also the welcomed inclusion of a split system heating/cooling, a full laundry with rear access and carport.

Price : \$ 943,000

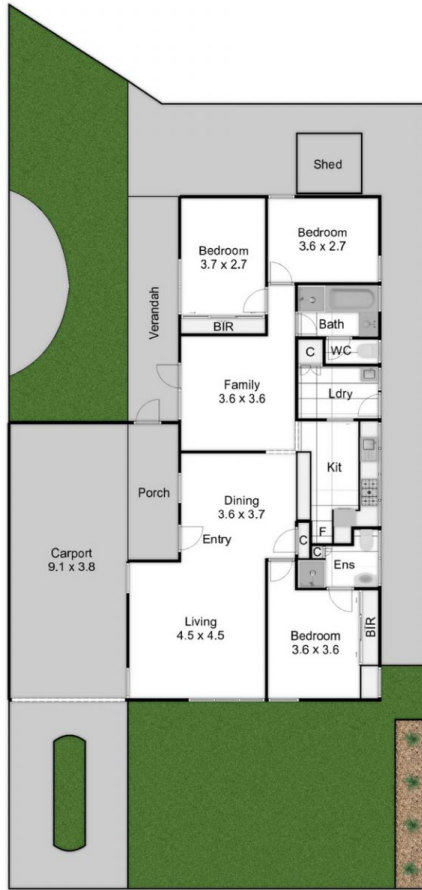
View : <https://www.lewinrealestate.com.au/sale/vic/bayside/parkdale/residential/house/7995625>



Brian Lewin
0434047939



Lesley Kilby
0428277263



2/8 Hawke Street
Parkdale

This floorplan is a sketch. All data shown is general only.
NB: All dimensions stated are approximate only and should not be taken as definite.