



305/2A Major Street HIGHETT VIC

2 2 1

Embrace an enviable lock & leave lifestyle or simply add to your growing property portfolio with confidence thanks to this stylishly appointed 2-bedroom, 2-bathroom apartment in the heart of vibrant Highett.

Situated on the top floor of a sleek boutique group just footsteps to the station, the easy-care home is a setting of sophisticated style & space. Featuring an open plan living/meals area with alfresco access plus a sleek monochromatic kitchen with premium finishes & quality appliances, there are also two fully-tiled designer bathrooms, including the luxe master ensuite.

Split system heating/cooling keeps the interiors comfortable even on the warmest or coolest of days, while other highlights include a European-style laundry, secure intercom entry and lift access to the basement parking space and storage cage.

Merely a few footsteps to the suburb's impressive dining scene, this prized beachside-of-the-highway address is close to daily necessities such as Woolworths, and just minutes to Southland, leading bayside schools, parks and the bay.

[For full version visit the website](https://www.lewinrealestate.com.au/sale/vic/bayside/highett/residential/apartment/8035824)

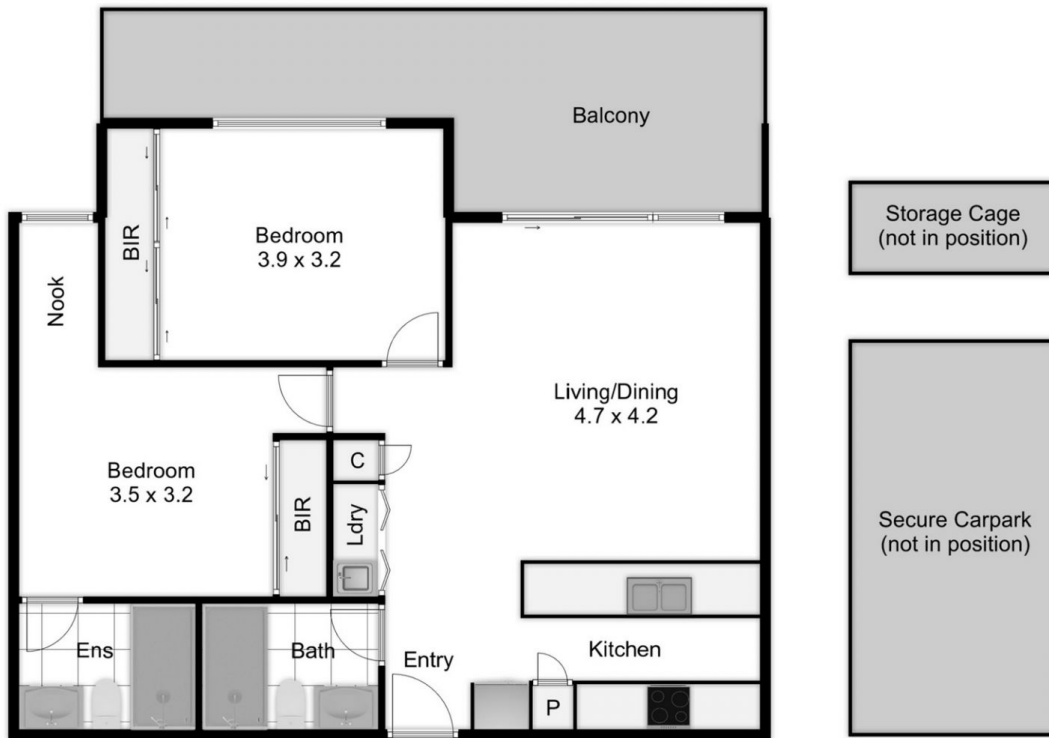
Type : Apartment
Price : \$ 567,500
View : <https://www.lewinrealestate.com.au/sale/vic/bayside/highett/residential/apartment/8035824>



Lesley Kilby
0428277263



Brian Lewin
0434047939



305/2a Major Street Highett

This floorplan is a sketch. All data shown is general only.
 NB: All dimensions stated are approximate only and should not be taken as definite.